

Processing Center Optimat ABD 100



Optimat ABD 100

**Horizontal drilling, gluing and
dowelling with one machine**

Highlights:

- Addition to the processing center or stand-alone solution
- No prescribed drilling or dowelling patterns
- Simple and rapid material handling
- No set-up times
- Easy software programming with woodWOP

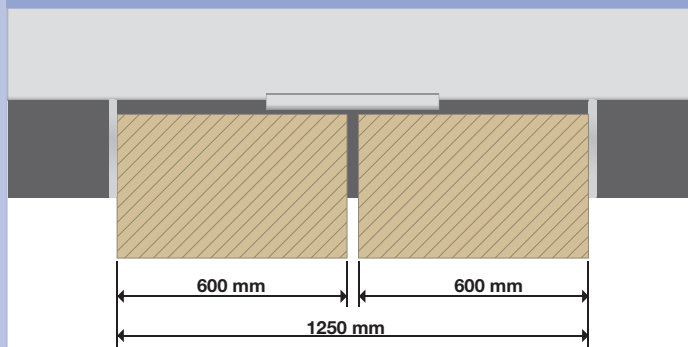


Drilling spindle and doweling aggregate (standard)



For precise processing while drilling and dowelling horizontally

Alternate operation 2 x 600 mm

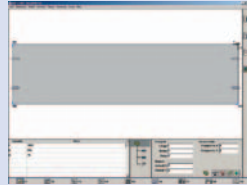


4-fold positioning via centre stop, optionally available



Software

woodWOP



- Modern software based on Windows®
- More than 10.000 installations worldwide

MCC



- Modern and simple control of main machine functions through soft keys
- Graphical loading

MDE



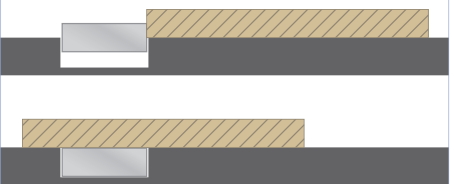
- Machine Data Recording - collecting and evaluating machine states via time meter and event meter

power control with UPS



- 15" TFT monitor
- CD-writer
- Modem
- USB frontside bus
- UPS - protects the computer against damages in case of mains interruption

Retractable guides (option)



For processing of extended workpieces (>1250 mm)

Barcode interface (option)



Barcodescanner / -software

3 vertical drilling spindles (option)



Individually selectable drilling spindles with 32 mm pitch for diverse drill diameters up to Ø 35 mm

3 horizontal drilling spindles (option)



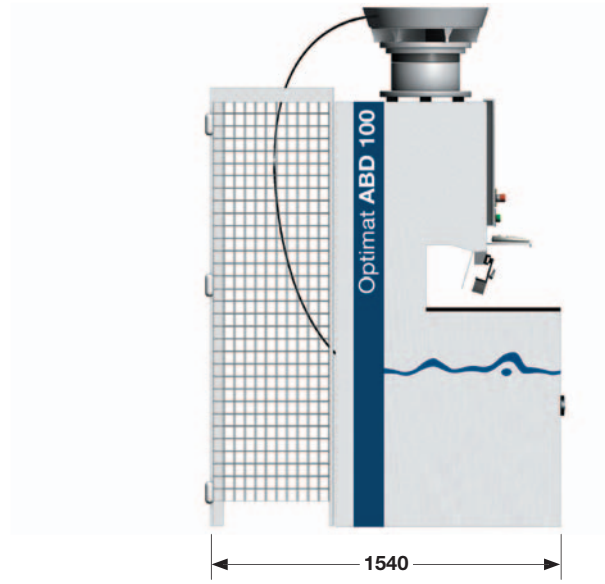
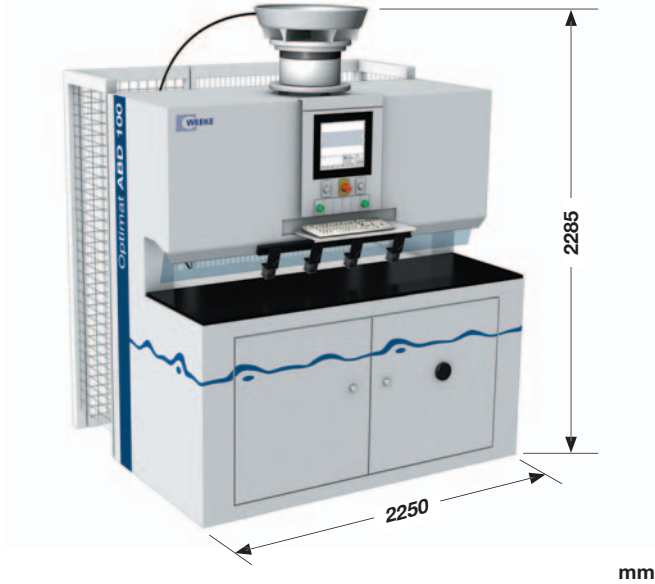
Individually selectable drilling spindles in 32 mm pitch for diverse drill diameters and doweling distances (64 mm / 96 mm)

NC-Axes in Y und Z (option)

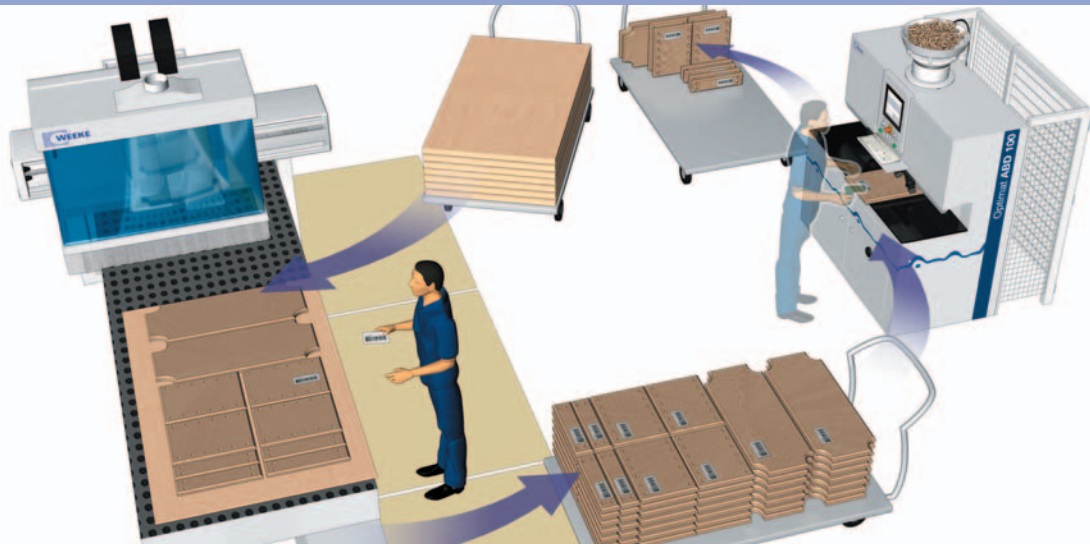


For automatic adjustment of diverse work-piece thicknesses, drilling depths and distances to the workpiece edge

Setting up dimensions



Handling example

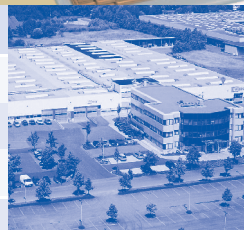


NOTE: Equipment as described in this brochure is subject to technical changes and further developments. Some photos show options which are not included in the standard machine configuration. Technical data refer to standard equipment and are not binding for the order. Prospekt ABD 100 Mar/2006 E

TECHNICAL DATA

Workpiece dimensions

Length/Width/Thickness (min)	mm	20/50/10
Length/Width/Thickness (max)	mm	1250/800/60
Compressed air connection	inch	R 1"
Compressed air supply	bar	min. 7
Total connected voltage	kW	appr. 7,7
Extractor connection	mm	1 x D 80
Extraction speed	m/sec.	min. 30
Supply voltage	A	25
Total machine weight	kgs	appr. 1600



WEEKE Bohrsysteme GmbH

Benzstraße 10-16
33442 Herzebrock-Clarholz
GERMANY

Tel.: +49 5245 445-0
Fax: +49 5245 445-139

info@weeke.de - www.weeke.de